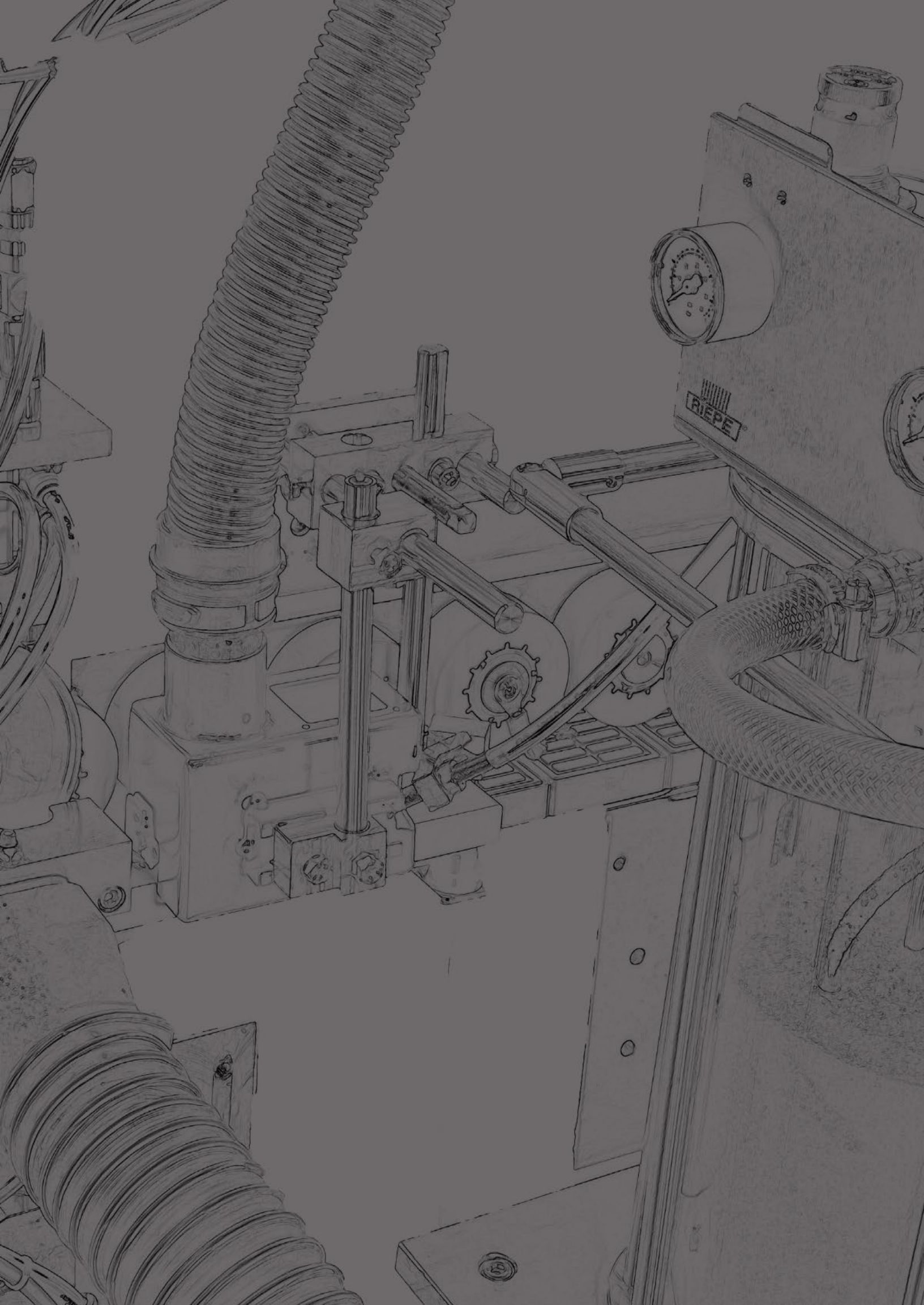




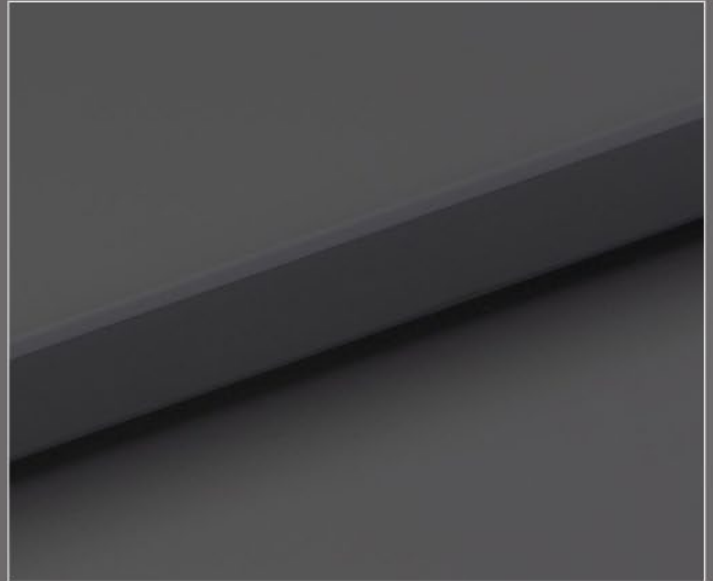
# FROSTED EDGE TECHNOLOGY



## Matte is the new glossy

For many years, high-gloss surfaces were the leading development in the field of modern furniture components. We are observing a trend reversal here, as matte decors are currently enjoying ever greater popularity on the market due to their appealing look and feel.

With current possibilities, this presents the furniture manufacturer with technical challenges in the field of edge processing. Edge bands to match the matte surface of the furniture decors are of course available, but a glossy edge band radius is produced while the part is processed in the edge banding machine.



Whereas complex and expensive painting work was previously necessary, there is now the option of producing a matte finish on the edge band radius directly within the edge banding machine.

## Our newest innovation: **Frosted Edge Technology**



**F.E.T.** creates a matte radius finish and a harmonious overall impression with adapted haptics



## Matte finish without varnishing



As the final processing unit in edge processing , **Frosted Edge Technology** applies an environmentally friendly, specially formulated, organic blasting material through a fine nozzle to the edge band radius with pinpoint accuracy.



The special blasting material is stored in a transparent pressure tank.

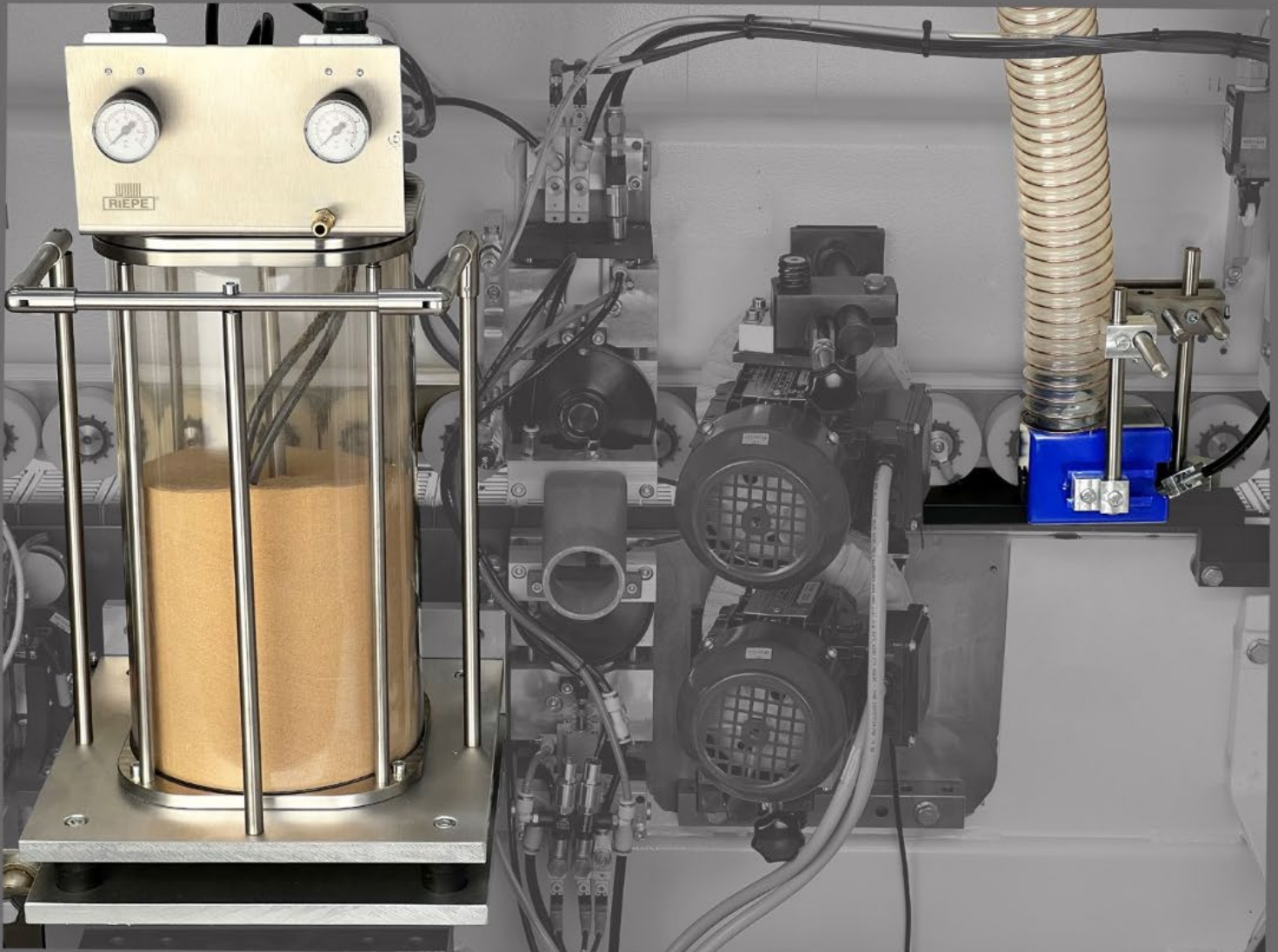
This can be placed in the close vicinity of the machine and only requires an electrical and a compressed air connection.

(24V/230V – 3 bar)

The application unit has a compact design and can thus often be retrofitted, despite the usually tight space conditions inside edge processing machines.



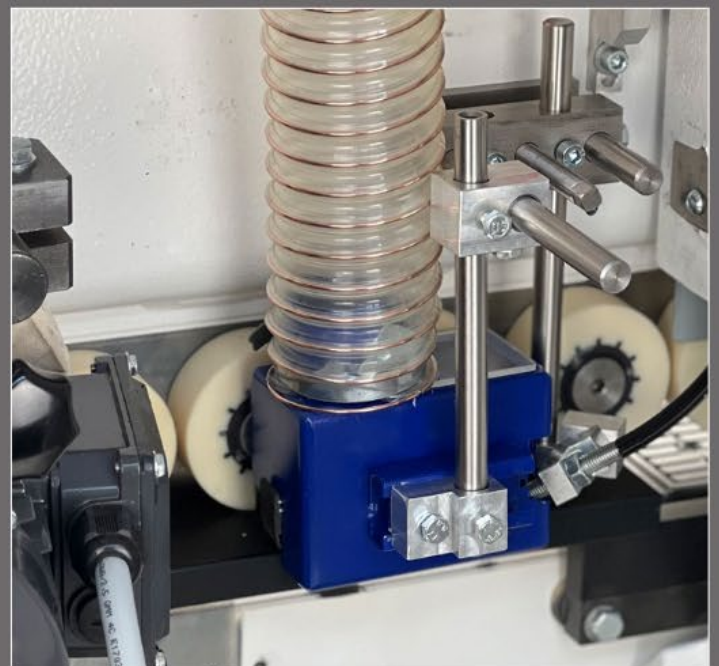
## Installation example



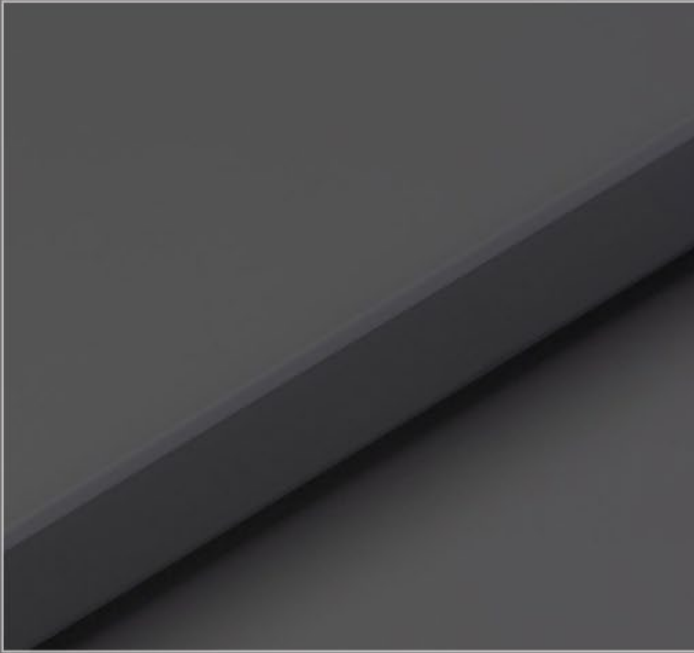
*The pressure tank can also be placed outside of the machine*

The application unit is connected to the existing machine exhaust. The switching and workpiece detection is carried out via the known RIEPE® electronics or via integration into the machines PLC by your machine manufacturer.

With one filling of blasting material (approx. 10 L), you can run approx. 2,500 linear meters at 20 m feed speed.



## Advantages of RIEPE® Frosted Edge Technology



Adapted haptics

Frosted radius

Perfect finish

Harmonious  
overall impression

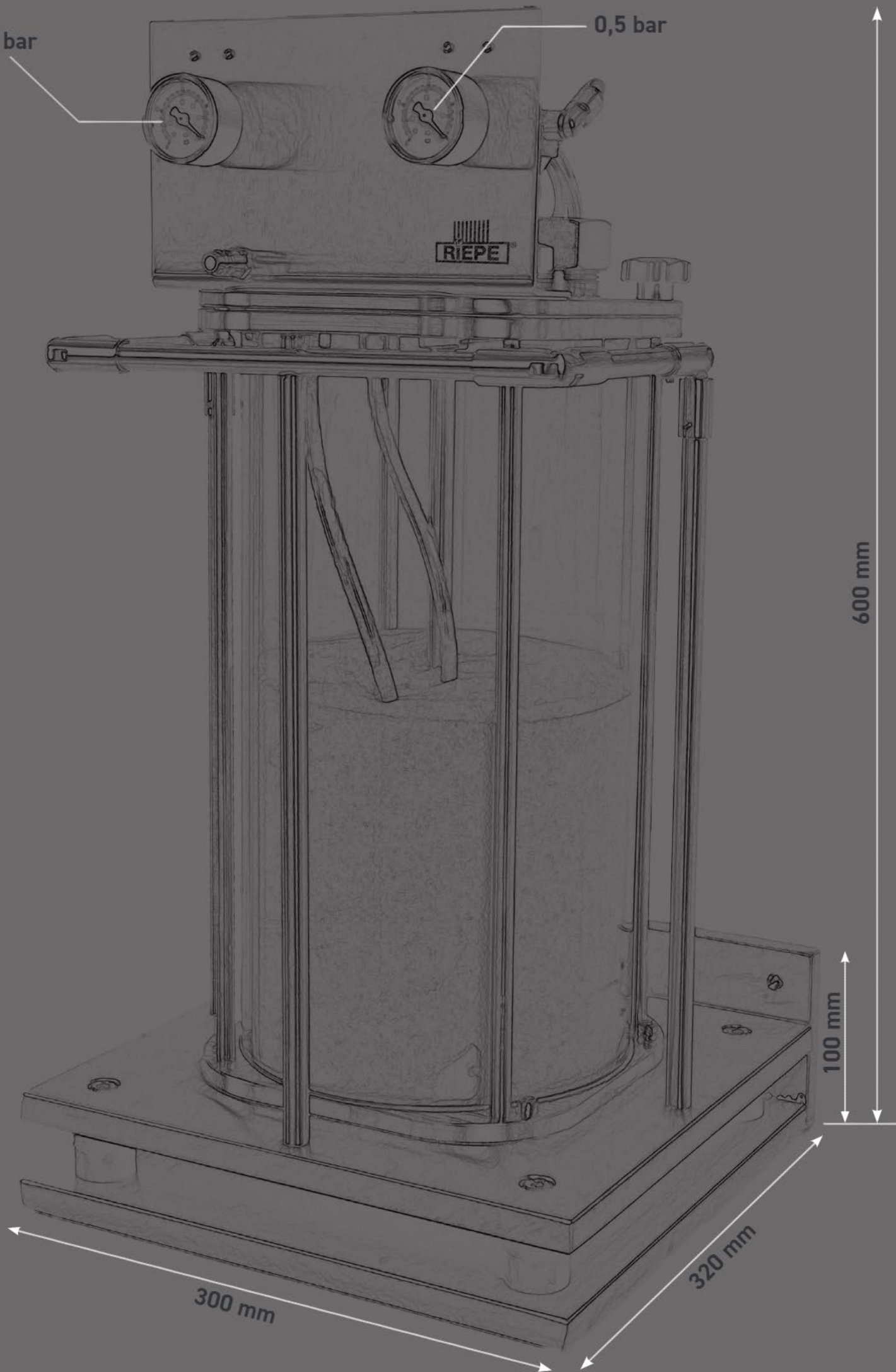


Milling stroke reduction

Process stability

Low operating costs







**Original RIEPE® products**  
are available worldwide



## **RIEPE GmbH & Co. KG**

Theodor-Rosenbaum Str. 24-30  
32257 Bünde · Germany

Phone +49(0)5223-68 74 07-0  
Fax +49(0)5223-68 74 07-50

[info@riepe.eu](mailto:info@riepe.eu) · [www.riepe.eu](http://www.riepe.eu)

